



## B. Updating the Bluetooth® Firmware Using a Windows XP Computer with Built-in Bluetooth Connectivity

### IMPORTANT

Please download and print these Bluetooth Firmware Update instructions before downloading and installing the firmware update. It is very important that you complete all steps correctly and the order described below. This firmware update can only be performed via a Bluetooth connection between the Pioneer receiver and a Bluetooth enabled computer.

In order to perform this update, the following items are needed:

- **Pioneer in-dash AVH-P8400BH multimedia receiver**
- **Laptop with a Bluetooth dongle**
- **HW05-SW01.30.10 Bluetooth Firmware downloaded from [www.pioneerelectronics.com](http://www.pioneerelectronics.com)**

### PREPARING THE FIRMWARE UPDATE

#### Step 1

Locate and copy the [FC6000S\\_01-30-10\\_64\\_Bx\\_xxxSx\\_PIONEER\\_44100\\_SAFEUPDATE.plf](#) file that was previously downloaded in Step A onto the desktop of your Bluetooth-enabled computer.

### PREPARING THE AVH-P8400BH FOR BLUETOOTH FIRMWARE UPDATE

#### Step 1

Before proceeding, disconnect any connected iPhone, iPod, OR USB device from the receiver. Turn the vehicle's key to the ON position and power up the AVH-P8400BH.

#### Step 2

Clear the Bluetooth memory.

- Press the home button and select 'OFF' from the source icons.
- Press the home button → Press the "System" icon at the bottom of the screen → Select the "Bluetooth Memory Clear" option → Press "Clear" → Press "OK"
- Press the home button and select the BT Audio Source. Confirm that the receiver display changes from "READY" to "NO SERVICE" before proceeding.

#### Step 3

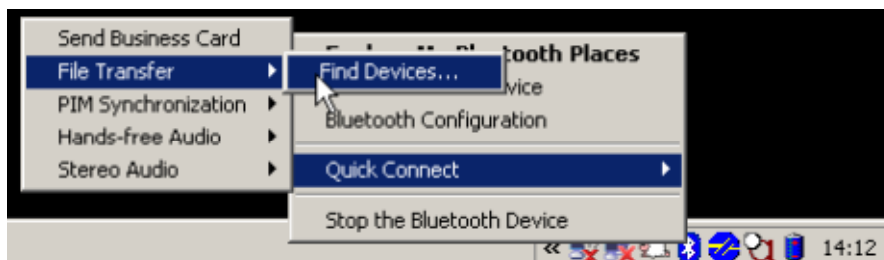
Access the Bluetooth connectivity feature of your Bluetooth-enabled laptop.

**The Pioneer receiver must remain powered on in the vehicle and within Bluetooth range in order to establish a Bluetooth connection with the laptop.**

Refer to your laptop's owner's manual for addition information on how to access Bluetooth features.

*Note: The following steps shown were performed using a PC running Windows XP with built-in Bluetooth connectivity.*

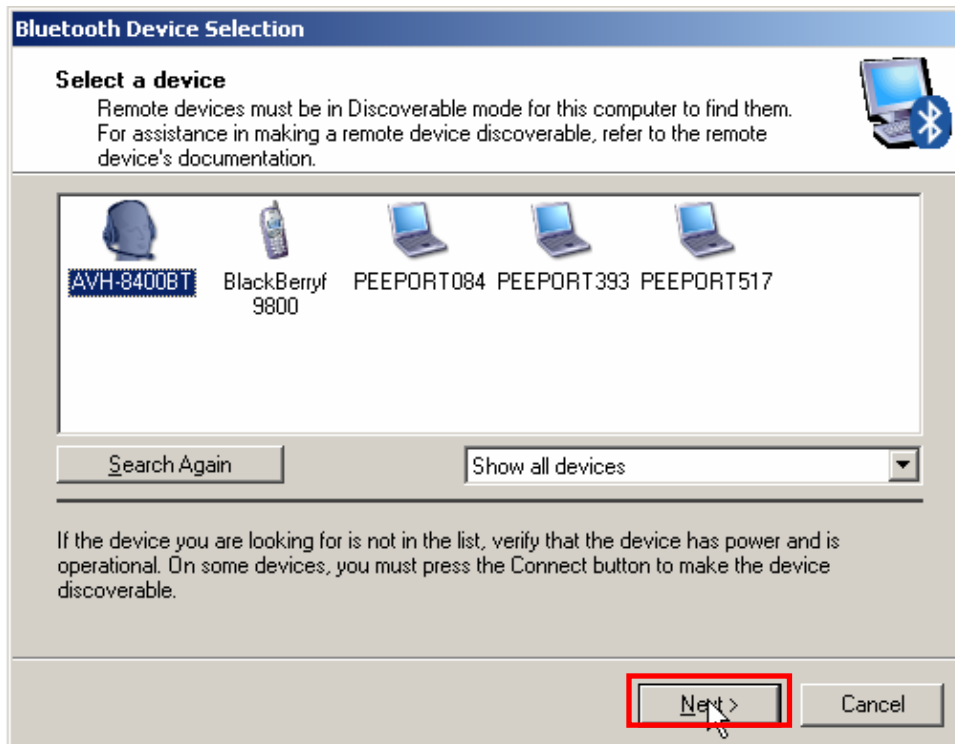
- Right-click on the Bluetooth icon in the Windows taskbar
- Mouse over to "Quick Connect", then to "File Transfer" and finally select "Find Devices..."





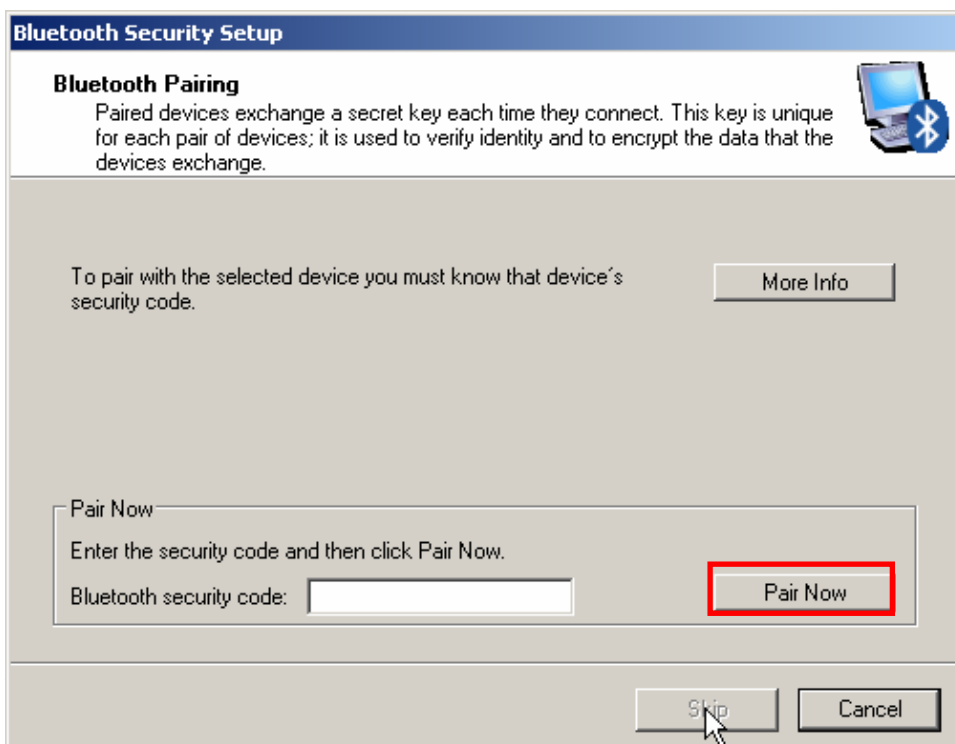
#### Step 4

With the “Show all devices” option selected, click the icon for the Pioneer model you wish to update and click “Next”:



#### Step 5

A Bluetooth Pairing screen should appear and ask for the device's security code. Enter 0000 and click “Pair Now”.



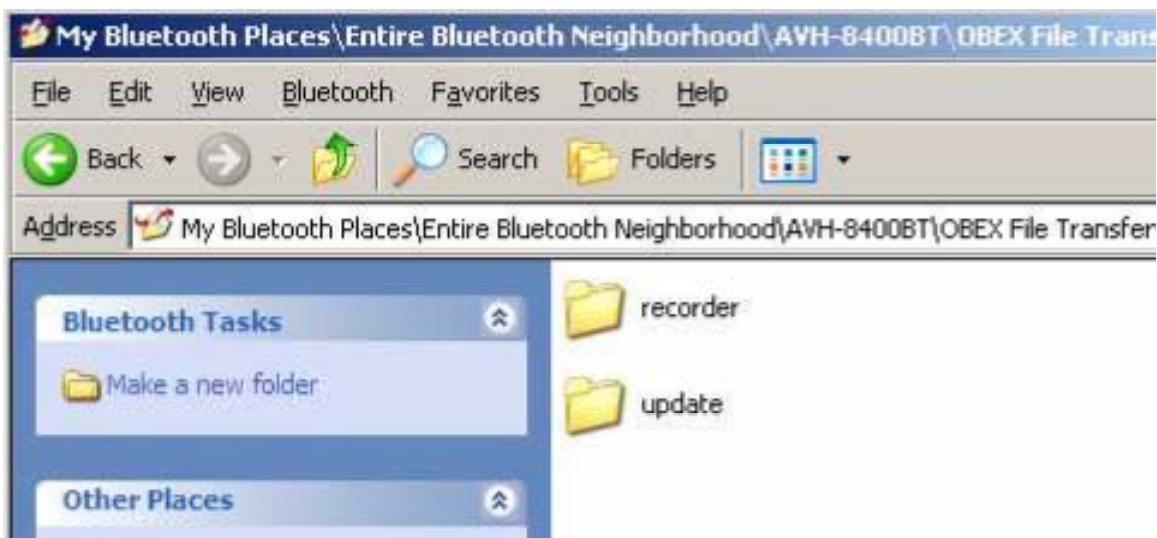
## Step 6

Complete the Bluetooth Setup Wizard by clicking "Finish".



## Step 7

A new folder for the Pioneer receiver will be created in your Bluetooth Places. Double click on the folder for your Pioneer receiver to access the OBEX File Transfer folder:





## INSTALLING THE BLUETOOTH FIRMWARE UPDATE

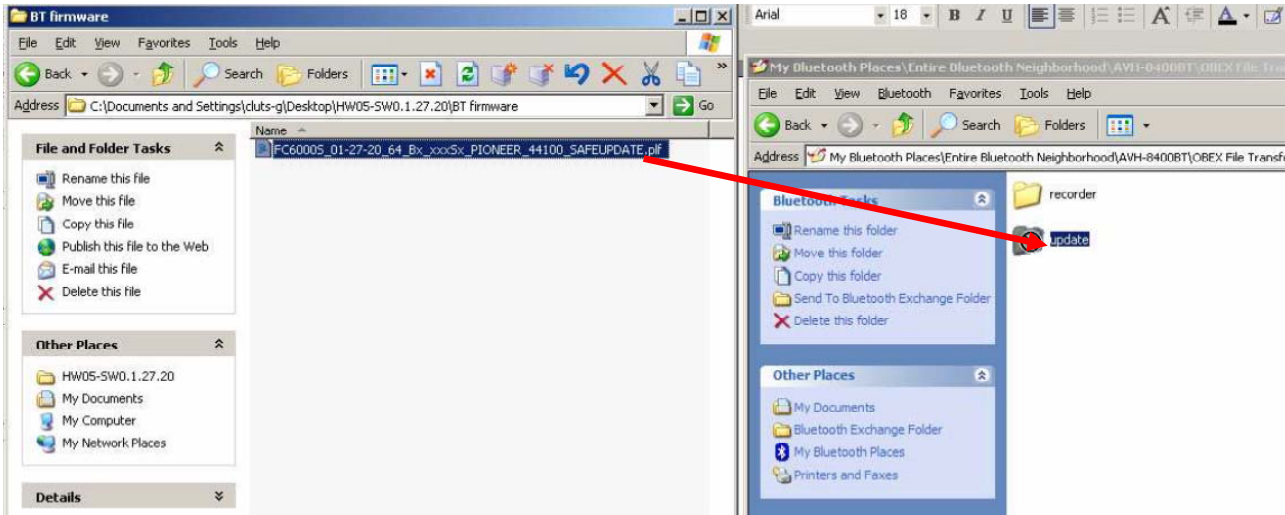
### Step 1

Access the Bluetooth Software Update option on the AVH-P8400BH.

- Press the home button and select 'OFF' from the source icons.
- Press the home button → Press the "System" icon at the bottom of the screen → Select the "BT Software Update" option → Press "Start" → "Updating" will appear onscreen.

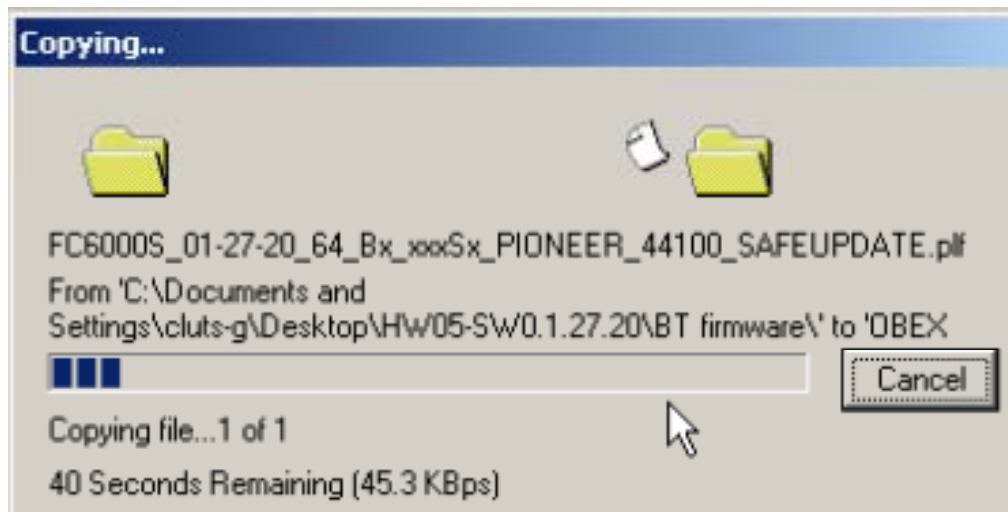
### Step 2

Drag and drop the [FC6000S\\_01-30-10\\_64\\_Bx\\_xxxSx\\_PIONEER\\_44100\\_SAFEUPDATE.pif](#) Bluetooth firmware file from the Windows desktop to the "update" folder for the AVH-P8400BH



### Step 3

During the file transfer, the following dialog box will appear on the laptop:



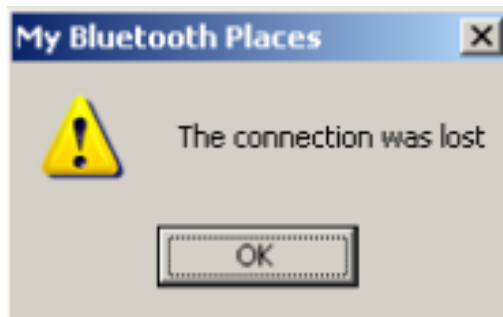


#### **Step 4**

Once the Bluetooth firmware update is completed, the touchscreen display of the AVH-P8400BH will display "Completed".



A lost Bluetooth connection dialog box on the laptop may appear- this message can be ignored.



#### **Step 5**

Confirm the updated Bluetooth firmware version on the Pioneer receiver.

- Turn the vehicle's key to the OFF position, wait a moment, and then turn the vehicle's key back to the ON position.
- With the unit turned off (press the home button and select 'OFF' from the source icons), press the home button → Press the "System" icon at the bottom of the screen → Select the "Bluetooth Version Info" option → The firmware version should show **HW05-SW01.30.10**.

#### **Step 6**

The Bluetooth firmware update process is now complete. You can proceed with Step C: Performing Part 1 of the (SYS) System Update.

#### ***Pioneer Electronics (USA) Inc.***

Customer Support Center

(800) 421-1404 M-F

10:30 AM- 7:00 PM Eastern Time, excluding holidays.

<http://www.pioneerelectronics.com>